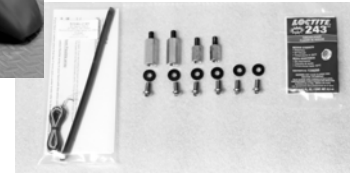




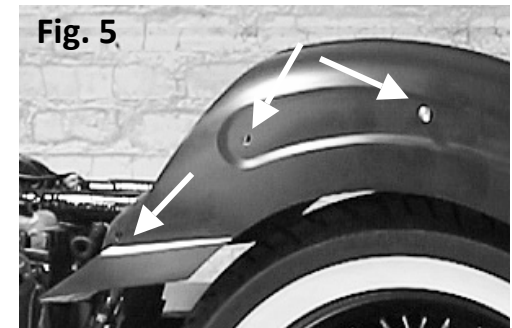
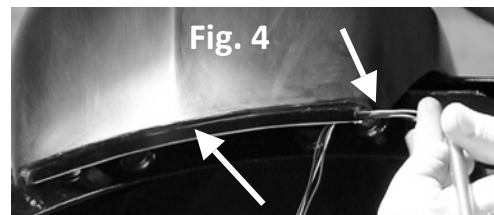
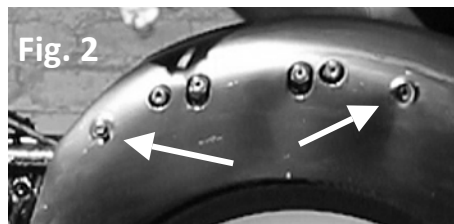
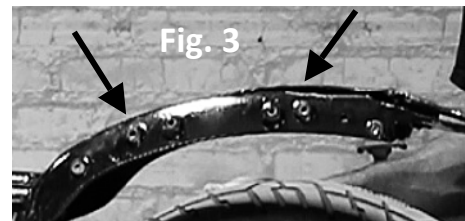
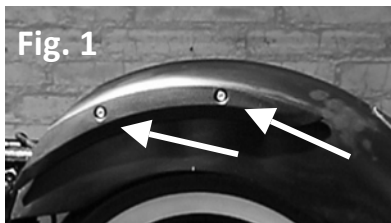
Scan the QR code to the left to be directed to the **How To Video** by Low and Mean
Let us know how your installation went. Send an email to techsupport@lowandmean.com



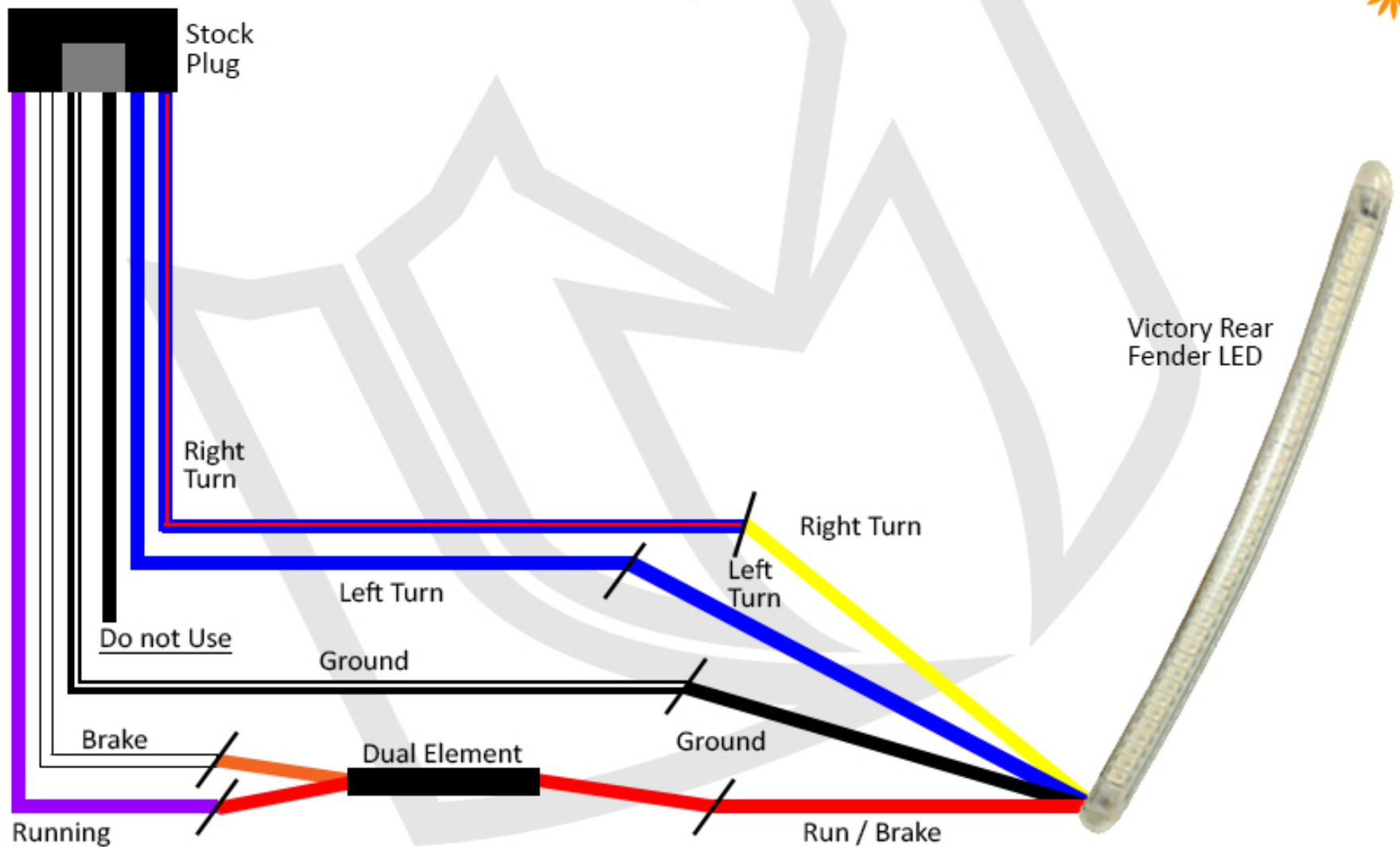
Parts Included:
Rear Smooth Fender
LED Light Bar
6 Bolts w/rubber washers
4 Stand Off Collars
Loctite

READ ALL INSTRUCTIONS BEFORE BEGINNING INSTALLATION

- 1 Remove the side covers - they pull off easily.
- 2 Remove your seat - there is one bolt on each side.
- 3 Unplug the wire harness leading to the rear fender.
- 4 Remove the fender strut's 2 bolts on each side of the fender. Fig. 1
- 5 Remove the other 2 bolts on each side and the fender. Fig. 2
Install the standoff collars included in the kit. The longer one goes to the front, the shorter one to the back. Use the 2nd hole from the front for the longer one and the second hole from the back for the shorter one. Fig. 3. Make sure you use the supplied Loctite.
- 6
- 7 Hand tighten these bolts alternating from one side to the other to ensure your fender bolts on straight.
- 8 Before mounting the Low and Mean Smooth Rear Fender, install the LED Lights. Thread the wires through the hole in the back of the fender and then clean and dry the slot across the rear of the fender. Peel the double sided sticky tape and press the LED light bar into place. Fig 4.
- 9 Route the wires along the inner top side of the fender just above the mounting holes. You will have to wire these into the stock wire harness. Reference the wiring diagram for correct color combos.
- 10 Slide fender into place, using the supplied bolt and rubber washer. bolt the fender to the frame. The rubber washer goes between the fender and the frame. There are six mounting spots: 2 on each side of the fender and two at the front bottom under the seat. Fig. 5
- 11 Wire the LED Light Harness to the stock harness. *See wiring diagram.*
- 12 Re-install the seat and side covers. The Stock Fender Struts are not used in this install.



Victory Rear fender LED Wiring Diagram



** This wiring diagram is modeled after the 2014 Victory Highball wires. Sometimes colors vary between year to year. If your wires do not match, please refer to your service manual.